

CANTERBURY REGION

St John Ambulance

Draft Canterbury CDEM Group Plan

SUMMARY

1. INTRODUCTION

- 1.1 The purpose of the St John Northern Region South Island (NRSI) CDEM Strategic Plan is to provide agencies likely to be involved in Civil Defence Emergency Management incidents with a reference guide and a strategic overview of the St John roles, responsibilities and capabilities.
- 1.2 The plan sets out the organisational structure of St John in the Canterbury Region and should be read in conjunction with the New Zealand Ambulance Services National Multiple Casualty Incident and Disaster Plan, Standard Operating Procedures and local instructions that may be promulgated from time to time.

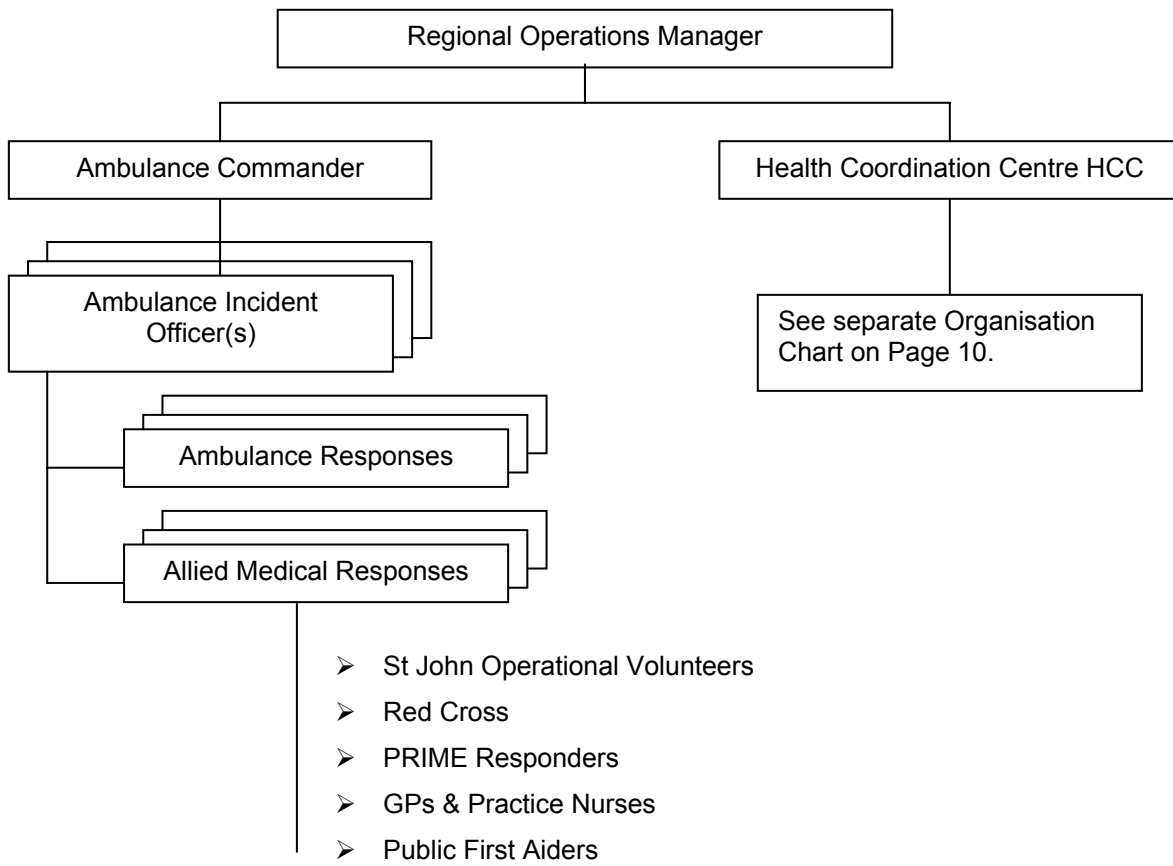
2. DISTRICT

- 2.1 For the purposes of the plan the area covered is bounded by the Clarence River in the north, the Waitaki River in the south and the Southern Alps to the west. All ambulance services within this area are provided by St John.
- 2.2 This District includes all those Territorial Authorities that comprise the Canterbury CDEM Group.

3. ORGANISATION

- 3.1 The St John NRSI Ambulance Service is based in Christchurch, with a CEO responsible for the administration of the wider St John Organisation and a Regional Operations Manager responsible for ambulance services throughout the Region.
- 3.2 There are two District Operations Managers in the region, one at Timaru, responsible for ambulance services for South Canterbury, Waimate and McKenzie Territorial Authorities (TA) areas.
- 3.3 The other at Christchurch is responsible for services in the Kaikoura, Hurunui, Waimakariri, Christchurch, Selwyn and Ashburton TA areas.

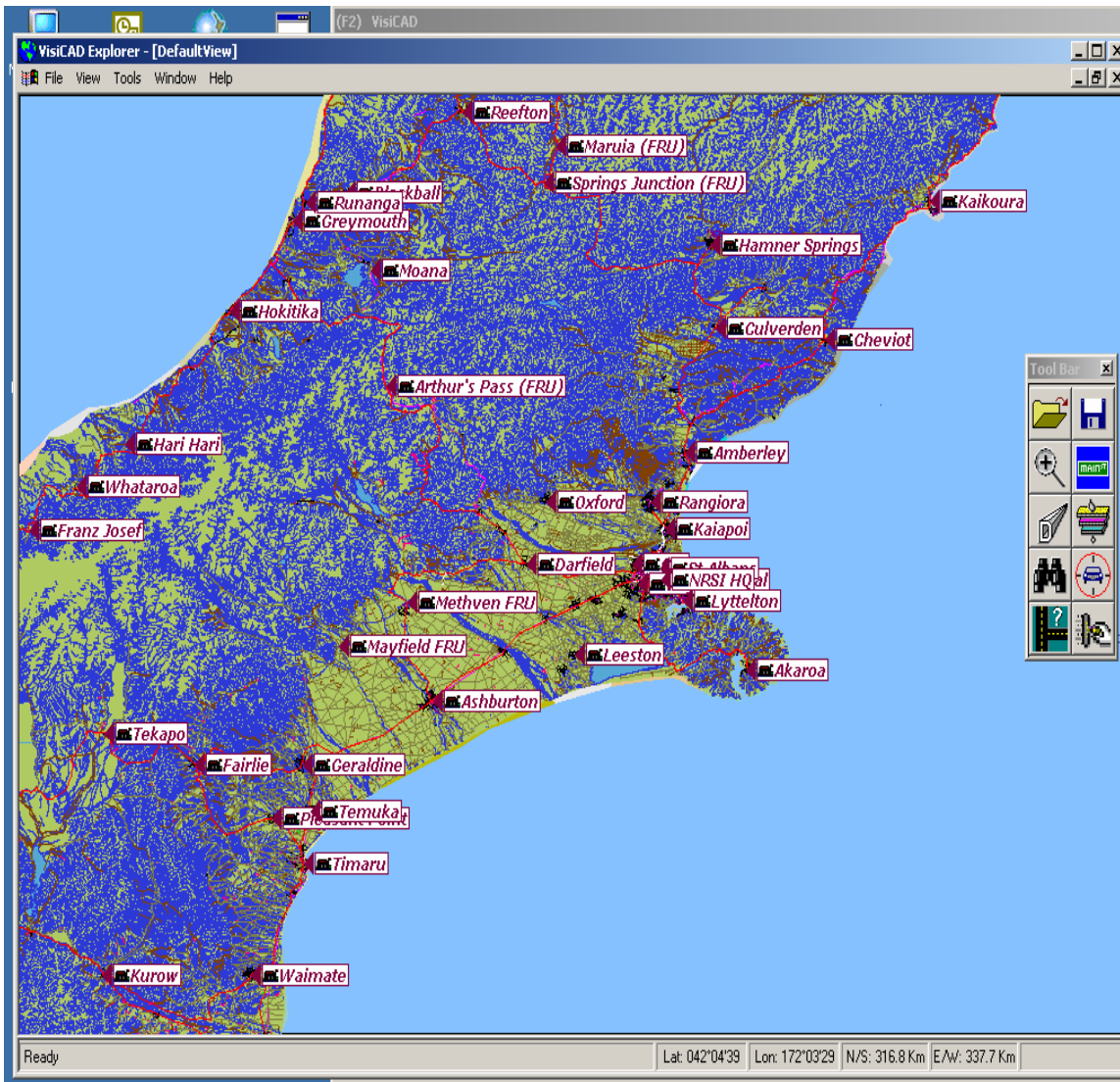
Figure 1. Ambulance Incident Organisational Structure.



Note: This structure is for basic operations, in involved or complex responses the appropriate roles and functions under the CIMS Structure are followed.

3.4 Ambulance stations throughout the region are shown on the following map. There are station officers in charge at each location, paid full time staff at Kaikoura, Amuri, Rangiora, Ashburton and Waimate. A volunteer fills this position at all other locations

Figure 2. Canterbury Ambulance Stations



4. ROLES and RESPONSIBILITIES

- 4.1 St John is prepared to meet the requirements of the National Civil Defence Plan, Part Six, Health, sections 23 & 24.
- 4.2 On a day to day basis the St John NRSI is contracted by the Ministry of Health (MoH) through the DHBs in Canterbury and South Canterbury and the Accident Compensation Corporation to provide pre hospital services for medical and trauma emergencies. This it will continue to do to the best ability in any emergency situation
- 4.3 This is managed from a headquarters in Christchurch. A regional communications centre (RCC) is established to coordinate responses from Ambulance staff, both paid and volunteer and in some locations by specially trained Doctors and practice nurses under the PRIME scheme.

- 4.4 In addition St John NRSI is contracted to the Ministry of Health to provide emergency management support and major incident response coordination for all health services including DHBs throughout the South Island. The response coordination is managed through Regional Health Coordination (RHC) provided at St John Headquarters in Christchurch or other appropriate location.

5. HAZARD SCOPE

- 5.1 A study has been made of the hazard register and consequences listed in the group plan and the implications for ambulance and health services identified.

6. COMMUNICATIONS

- 6.1 Communications for the ambulance service throughout the region are provided on the Ambulance Radio Network controlled by the Regional Communication Centre (RCC) based at St John Headquarters in St Asaph Street, Christchurch.
- 6.2 Back up for the RCC is provided by the Auckland RCC, facilities at Christchurch Police Station and a mobile Command Unit.
- 6.3 Radio links are established with all ambulances and hospitals throughout the region. There is also a radio link with the CDEM EOC at Ecan.

Emergency alerting system for responding the Ambulance service is 111 or Telephone 03 3666 111, or through local ambulance station or vehicle reporting to the RCC.

7. TRANSPORT

- 7.1 Fully equipped ambulances First response units and other first aid units are located throughout the region, these are distributed according to workload and this distribution can change each day.
- 7.2 St John NRSI also has agreement with the Canterbury Red Cross for the loan of 4 wheel Drive Ambulances for use in emergencies such as heavy snow conditions.
- 7.3 The RCC controls the use of Air Ambulances throughout the region.

8. LOGISTICS

- 8.1 St John NRSI maintains a supply of resources used by the service in a store based in Christchurch. There are smaller reserves at varying levels at all stations throughout the region. Arrangements exist with suppliers for urgent re-supply.
- 8.2 There are mass casualty incident supplies on trailers based in Christchurch and Timaru, these can be towed to the scene of a major incident.
- 8.3 Further supplies can be arranged through other ambulance services and hospitals not affected by any emergency.

9. CDEM LIAISON

- 9.1 During major incidents St John NRSI will maintain liaison with CDEM Controller(s) either at EOC (s) or by communication links. This liaison will be at a local TA level or ECC depending on the nature and spread of the event.

10. PUBLIC INFORMATION

10.1 All public and/or media information from St John NRSI during any emergency situation shall only be released in consultation with the CDEM Controller.

11. REGIONAL HEALTH COORDINATION (RHC)

11.1 The RHC for all pre hospital incidents in the South Island is a function of St John, based in Christchurch.

11.2 The Regional Operations Manager of St John (NRSI) is responsible for:

- Regional co-ordination of health responses to an emergency incident and support of DHBs when an emergency is taking place.
- Establishing and maintaining communication links with the MoH, other RHCs, DHBs within the RHC Region, and where appropriate Emergency Services and other relevant organisations.
- Providing links to Local Authorities and Government Departments (Regional Offices) as required.
- Providing links to regional organisations likely to provide assistance responding to health emergency incidents.
- Providing monitoring, obtaining status information, analysing resource requests from DHB(s)
- Arranging the supply of required resources.